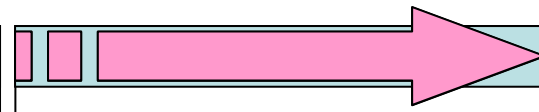


LED Electronic Sign

User Guide Manual

FEATURES	PAGE: 2
SETUP	3
SOFTWARE	4
MODIFY CONTENT	5
CREATE 2 LINE CONTENT	6
ADD BITMAP	7
ADD TIME, DATE, EVENT	8
PREVIEW, SETUP COMPUTER PORT & TIME	9
CREATE TEXT MESSAGE	10



FINEST LED SIGNS
4352 N FEDERAL HWY
FORT LAUDERDALE, FL 33308

954-771-5488
SHELDON DREYFUSS

NEW YORK METRO AREA
516-220-7064
MARK GLASER

About Safety



Do not bend or excessively twist the cord or place heavy objects on top of it. Excessive bending or twisting the cord or placing heavy objects on the cord may cause the wires inside to short circuit thus causing a fire hazard.



Do not touch plug or outlet with wet hands because touching the plug or outlet with wet or damp hands may cause electrical shock.



Plug securely into outlet so that it does not shake or wiggle loose. Loose plugs can overheat and cause an electrical fire.



Do not open, take apart or modify any part of the Sign. Opening or modifying this Sign in any way is dangerous and can result in short circuits that can cause bodily harm or even death.



If you detect smoke or smell anything unusual, immediately stop using the Electric Sign, turn off the power, unplug the Sign and then call the service center. Continuing to use the Sign after detecting smoke or an unusual smell is dangerous and it can result in fire.



Handle with care while transferring or carrying the Sign. Dropping the unit causes damage and it may not work properly.



While installing the Sign, be sure to fasten it securely. Unsecured Sign can fall causing injury and bodily harm.



Escape from installing the Sign near the severe vibration and a magnet or magnetic sources which will make it inoperable.

Features of LED Sign

- ◆ Users can freely adjust the size of letters and characters.
- ◆ Users can set up Sign by following basic steps 1-6 or by expanding and adding features during each step.
- ◆ Brighter than normal Signs.
- ◆ Sign is waterproof and completely safe for outdoor use.
- ◆ Sign has a unique Silicon waterproof treatment.
- ◆ Offers automatic On/Off feature.
- ◆ Can be programmed to display the date and time.
- ◆ Sign has a built-in timer chip used to display the time and date of various activities and functions using various graphic effects. It can also indicate current and future events to enhance your advertising.
- ◆ Choose up to 17 extra effects.
- ◆ Sing is capable of displaying approximately one hundred different and distinctive results.

Installation & Setup

Block Diagram



Supplied Items


- ➔ LED Sign.
- ➔ RS232 Cable (30m)
- ➔ CD contains Application Software "SignManager"

It's highly recommended to check whether all supplied items shown above are enclosed, when user opens carton box

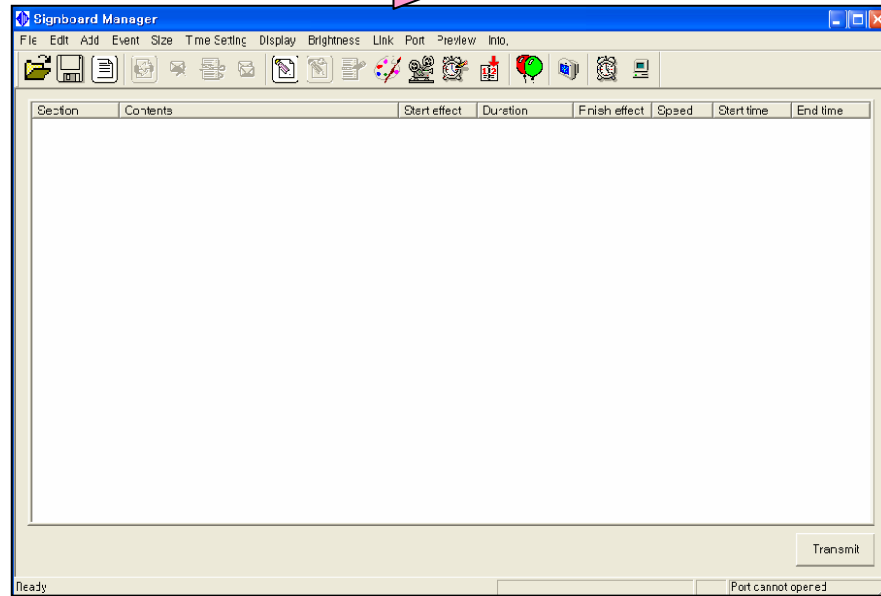
Minimum Specifications for Operating PC

- ➔ Processor : Intel Pentium IV or better
- ➔ System Memory : 128 MB
- ➔ Operating System : Microsoft Windows XP
- ➔ Communication Port : RS232


Procedure of Installation & Setup

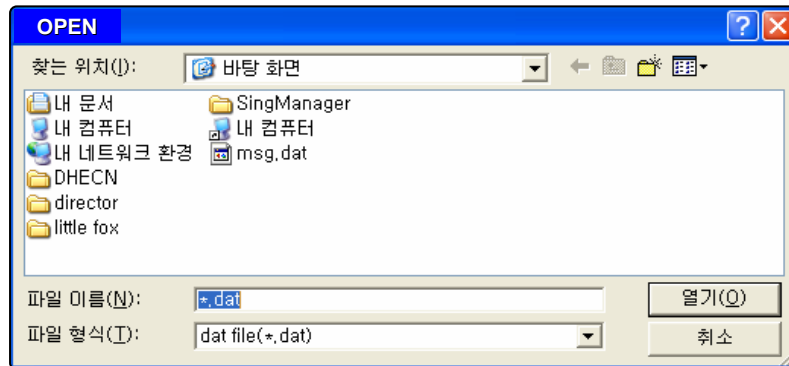
- ➔ Install LED Sign.
- ➔ Copy Application Software "SignManager" on user PC.
- ➔ Execute "DoubleManager.exe"
- ➔ Set communication port by clicking 
- ➔ Set Display Size by clicking "Size" on Main Menu.
 - ➔ Height : number of LED Module in vertical.
 - ➔ Width : number of LED Module in horizontal.


Application Software

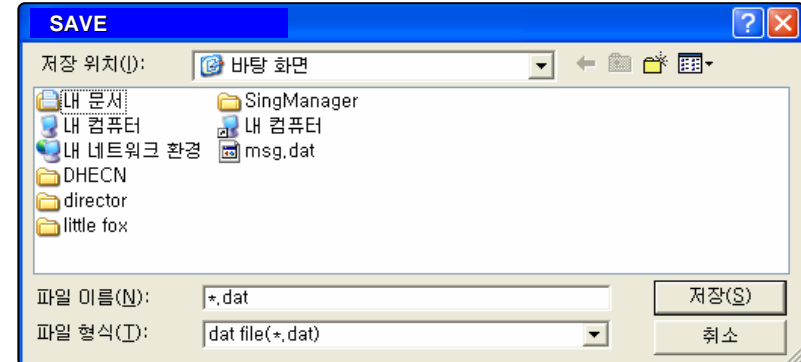


OPEN

Used to open file stored and the file extension is *.dat. Click the Menu , "Open" window appears like below, and choose the file want to open.



Used to save file after create new file and modify new file, the file extension is *.dat. Click the Menu , "Save" window appears like below, enter the file name and click "Save" button.




Used to create new file.

Application Software



MODIFY

Used to modify contents.
Highlight the content want to modify by clicking, and click the Menu , and "Modify" Window appears like below. User changes the content and other parameters.

Text (1 line)


Input: MSG SALES SOLUTIONS

Text Color	Background	Font	Option
<input type="radio"/> Red	<input checked="" type="radio"/> Black	<input checked="" type="radio"/> 1	Initial Effect: 1. Flow
<input type="radio"/> Green	<input type="radio"/> Red	<input type="radio"/> 2	Sec: 3
<input checked="" type="radio"/> Yellow	<input type="radio"/> Green	<input type="radio"/> 3	Finish Effect: 1. to the left
<input type="radio"/> Black	<input type="radio"/> Yellow	<input type="radio"/> 4	Speed: 1
			Display On: 오전 12:00:00
			Display Off: 오전 12:00:00

Cancel OK




DELETE

Used to delete Contents.
Highlight the content want to delete by clicking, click the menu , and then the content chosen disappears.




CUT

Used to cut Contents to paste or/and move it in other order.
Highlight the content want to cut by clicking, click the menu , and then the content chosen disappears




PASTE

Used to paste Contents after cut.
Highlight the one of contents where the pasted content will be copied by clicking and click the menu , then pasted content will be shown.



1 LINE

Used to create 1-line Content.
Click the Menu , and "Text (1 line)" Window appears like below.
Type the message want to create, change the parameters and push "OK" button to finish, then you find new Content created.

Text (1 line)

Input: iLumix Corp

Text Color	Background	Font	Option
<input type="radio"/> Red	<input checked="" type="radio"/> Black	<input checked="" type="radio"/> 1	Initial Effect: 1. Flow
<input type="radio"/> Green	<input type="radio"/> Red	<input type="radio"/> 2	Sec: 3
<input checked="" type="radio"/> Yellow	<input type="radio"/> Green	<input type="radio"/> 3	Finish Effect: 1. to the left
<input type="radio"/> Black	<input type="radio"/> Yellow	<input type="radio"/> 4	Speed: 1
			Display On: 오전 12:00:00
			Display Off: 오전 12:00:00

Cancel OK

Application Software



2 LINES

Used to create 2-line Content.

Click the Menu  and “Text (2 line)” Window appears like below.

Type the message want to create in the first line on “UP TEXT” and the message want to create in the second line on “DOWN TEXT”.

Change the parameters for the first line and second line respectively and push “OK” button to finish, then you find new Content created.

Text (2 line)

up text

Input: MSG SALES SOLUTIONS

Text Color: Red Green Yellow Black

Background: Black Red Green Yellow

Font: 1 2 3 4

Option: Initial effect: 1. Flow Sec: 3 Finish effect: 1. to the left

down text

Input: iLumix Corp

Text Color: Red Green Yellow Black

Background: Black Red Green Yellow

Font: 1 2 3 4

Option: Initial effect: 1. Flow Sec: 3 Finish effect: 1. to the left

Setting: Speed: 1 Display On: 12:00:00 Display Off: 12:00:00

OK Cancel

NOTE !!

The menu can be applied for only two line models.



TITLE

&

TEXT

Used to create content which has title in the first line and message in the second line.

Click the Menu , “Tile & Text” Window appear like below.

Type the Title want to create on “TITLE” and the message want to create on “TEXT”.

Change the parameter for Title and Text respectively and push “OK” button to finish, then you find new Content created.

Title & text

Title Input: LED Sign

Text Color: Red Green Yellow Black

Background: Black Red Green Yellow

Font: 1 2 3 4

Text

Text Input: MSG Sales

Text Color: Red Green Yellow Black

Background: Black Red Green Yellow

Font: 1 2 3 4

Option: Initial effect: 1. Flow Sec: 3 Finish effect: 1. to the left

Speed: 1

Display On: 12:00:00

Display Off: 12:00:00

Cancel OK


NOTE !!

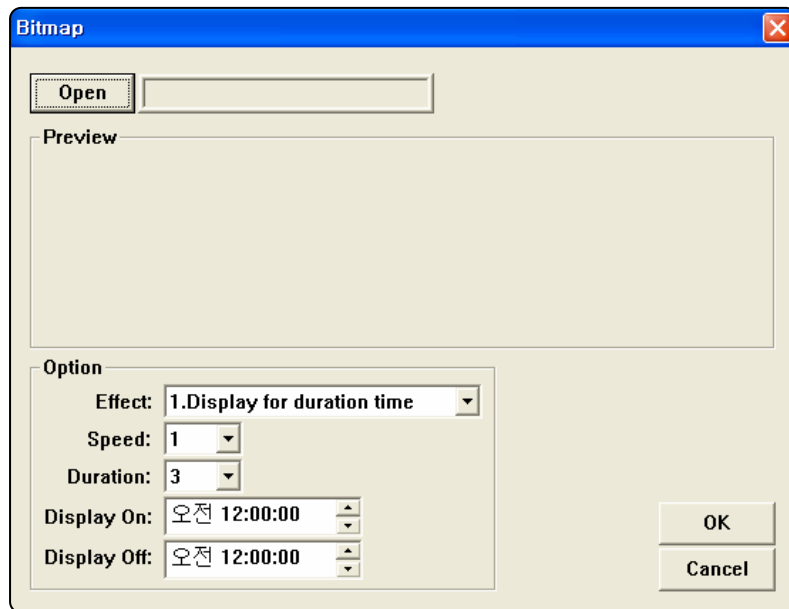
The menu can be applied for only two line models.

Application Software



BITMAP

Used to add Bitmap file as a content.
Click the Menu  and "Bitmap" Window appears like below.
Push the button "OPEN", select the Bitmap file to add, change the parameters and then push the button "OK" to finish.



NOTE !!


The available file is *.bmp only.

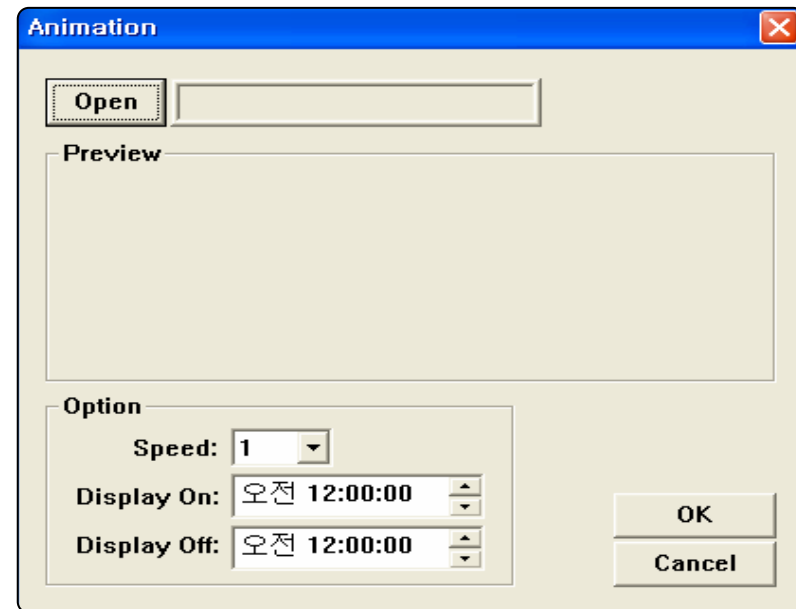
The available resolution of bitmap file shall be same as the resolution of LED Sign.

For ILXXX_0105 → W80 x H16 pixels



ANIMATION

Used to add Animation file as a content.
Click the Menu  and Animation Window appears like below.
Push the button "OPEN", select the Animation file to add, change the parameters and then push the button "OK" to finish.



NOTE !!

The available file is *.gif only.


The available resolution of gif file shall be same as the resolution of LED Sign.

For model, ILXXX_0105 → W80 x H16 pixels

Application Software




TIME

Used to add Time as a content.
Click the Menu  and "Time" Window appears like below.
Change the parameters and then push the button "OK" to finish.




D-DAY

Used to add D-Day message as a content.
Click the Menu  and "D-Day" Window appears like below.
Set the D-Day, type the message, change the parameters and then push the button "OK" to finish.




EVENT

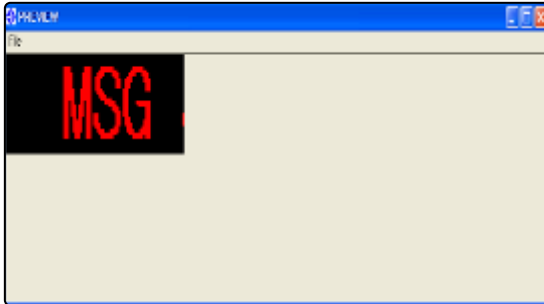
Used to add Event file as a content.
Click the Menu  and "Event List" Window appears like below. Push the button "Add" and "Event Edit" Window appears like below. Type the message want to display, change the parameters and then push the button "OK" to finish the Event Edit.
Highlight one of Event messages by clicking and push the button "Apply" to transfer the message.
If user want to create more Event message, repeat it again, and push the button "Close" to finish.

Application Software



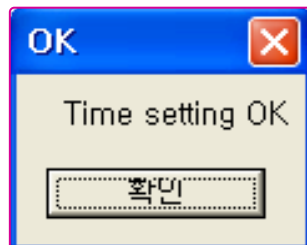
PREVIEW

Used to preview the contents created.
Click the Menu  and "PREVIEW" Window appears like below.



TIME SET

Used to Set up time.
Click the Menu and Time of PC is transferred to LED and "Time Setting OK" Window appears like below.

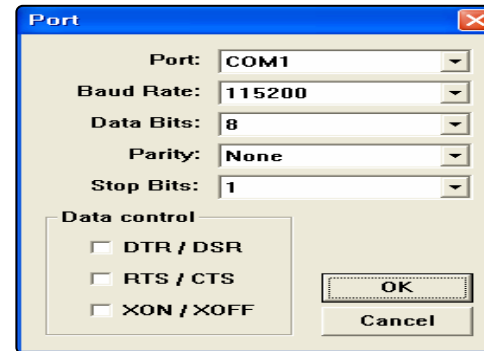


PORT

Used communication port and setup
Click the Menu  and "PORT" Window appears like below.

Choose the port to communicate and push the button "OK" to finish.

Following setting is default.



Input Message

I. EXECUTE APPLICATION SOFTWARE

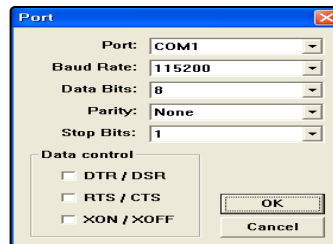
Copy Folder "SignManager"

Open Folder "SignManager"

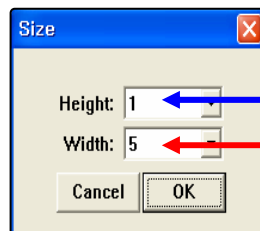
Execute DoubleManager.exe

II. SOFTWARE SETUP

Communication Setup

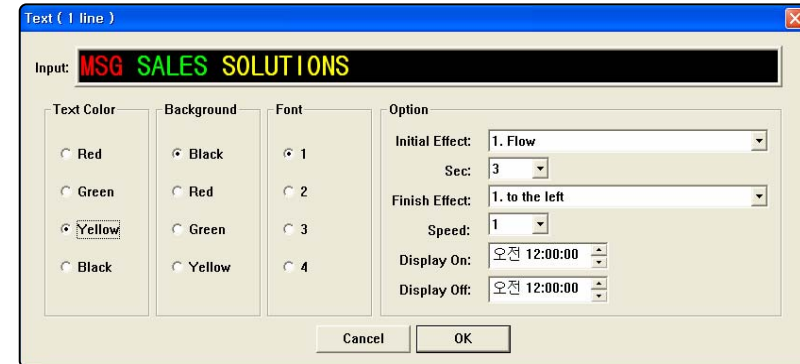



Setup Display Size



IL320RpG_0105

III. CREATE TEXT MESSAGE



- Push the button 
- Type Message on "Input"
- Change the parameters, Text Color, Background, Font and others.
- Push the button "OK" to finish
- Push the button " Transmit" on the right and bottom.